

Technical data sheet

Clamp clip 2056 N-foot, 1-fold, metal pressure sleeve, A2

Item number: 1188386



Clamp clip with N-foot, metal pressure sleeve with rounded edges to protect the cable. For vertical and horizontal mounting of 1 single cable on a C-profile rail. For slot width 11–12 mm With 1-start screw thread on pressure sleeve, universal hexagonal screw head WAF10, with slot and cross recess. Suitable for assembly indoors and outdoors. We recommend the use of a counter-sleeve.



A2 Stainless steel

2B Bright, treated

Master data

| | |
|---------------------|-----------------|
| Item number | 1188386 |
| Type | BS-N1-M-40 A2 |
| Description 1 | Clamp clip 2056 |
| Manufacturer | OBO |
| Dimension | 34-40mm |
| Material | Stainless steel |
| Surface | Bright, treated |
| Surface standard | |
| Smallest sales unit | 100 |
| Unit of quantity | Piece |
| Weight | 7.839 kg |
| Weight unit | kg/100 pc. |

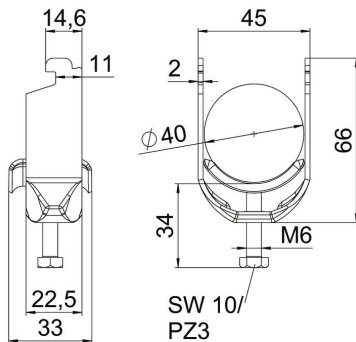
Technical data sheet

Clamp clip 2056 N-foot, 1-fold, metal pressure sleeve, A2

Item number: 1188386



Dimensions



| | |
|------------------|---------|
| Length | 22.5 mm |
| Width | 45 mm |
| Height | 66 mm |
| Plate thickness | 2 mm |
| Dimension A | 22.5 mm |
| Dimension B | 45 mm |
| Dimension C | 33 mm |
| Dimension G (mm) | M6 |
| Dimension H | 66 mm |
| Dimension L | 34 mm |
| Dimension t | 2 mm |

Technical data

| | |
|--|-----------------|
| Number of cables/pipes | 1 |
| For pipe diameter, max. | 40 mm |
| For pipe diameter, min. | 34 mm |
| for rail with slot width (with interval), max. | 12 mm |
| for rail with slot width (with interval), min. | 11 mm |
| Thread | M6 |
| Halogen-free | yes |
| Length of external dimensions | 33 mm |
| Max. Tightening torque | 3 Nm |
| With plastic trough | no |
| With metal trough | yes |
| Mounting type | Profile rail |
| Slot width | 10 mm |
| Clamping range D, max. | 40 mm |
| Clamping range D, min. | 34 mm |
| Surface addition | Untreated |
| Material addition | Rustproof steel |