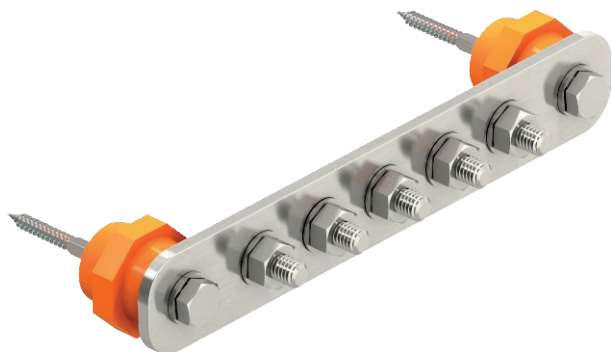


# Technical data sheet

## Equipotential busbar BigBar for industrial application

Item no. 5015854



- Main potential equalisation to VDE 0100 Part 410 and Part 540, and also lightning protection potential equalisation to VDE 0185-305 (IEC 62305)
- Insulation feet
- Quick, simple assembly of connection conductors to the contact rail using lock bolts M10
- The high-grade stainless steel versions (V2A) are suitable for outdoor use
- Complete with anchors and bolts for wall mounting
- With lock washer (DIN 137) for bolt locking against loosening (e.g. required in industry and Ex areas)

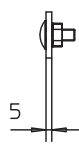
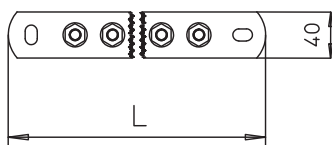


**VA** Stainless steel, rustproof 1.4301

### Master data

Item no.	5015854
Type	1802 5 VA
Description 1	Equipotential busbar
Description 2	BigBar / 5 connections
Dimension	5xM10
Material	Stainless steel, material no. 1.4301
Material symbol	A2
Smallest sales unit (VG)	1 Piece
Weight	90,00 kg/100 pc.

### Technical data



Length	246,00 mm
Width	40,00 mm
Height	5,00 mm
Number of connections	5
Quantity of round conductor connections, total	5
Quantity of round conductor connections 8 mm	0
Quantity of round conductor connections 10 mm	0
Quantity of round conductor connections 8-10 mm	0
Quantity of flat conductor connections up to 30 mm	0
Quantity of flat conductor connections up to 40 mm	0
Quantity of cable connections up to 6 mm <sup>2</sup> , rigid	0
Quantity of cable connections up to 16 mm <sup>2</sup> , rigid	0
Quantity of cable connections up to 25 mm <sup>2</sup> , rigid	0
Quantity of cable connections up to 95 mm <sup>2</sup> , rigid	0
Version	Only terminal
Shape	Modular structure
Lightning current carrying capacity	H/100 kA
Insulator	<input checked="" type="checkbox"/>
Short-circuit current (50 Hz)(1 s; ≤300°C)	7,30 kA
Material of the terminal	Stainless steel, rustproof 1.4301
Material of the contact rail	Stainless steel, rustproof 1.4301